



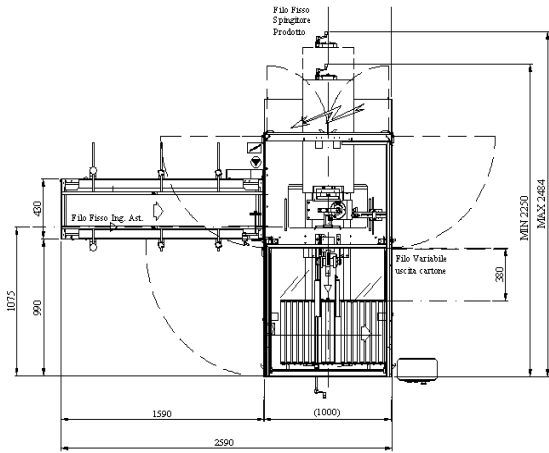
PS300 | Semi-automatic CasePacker



Liquids
Solids
Creams
Packaging

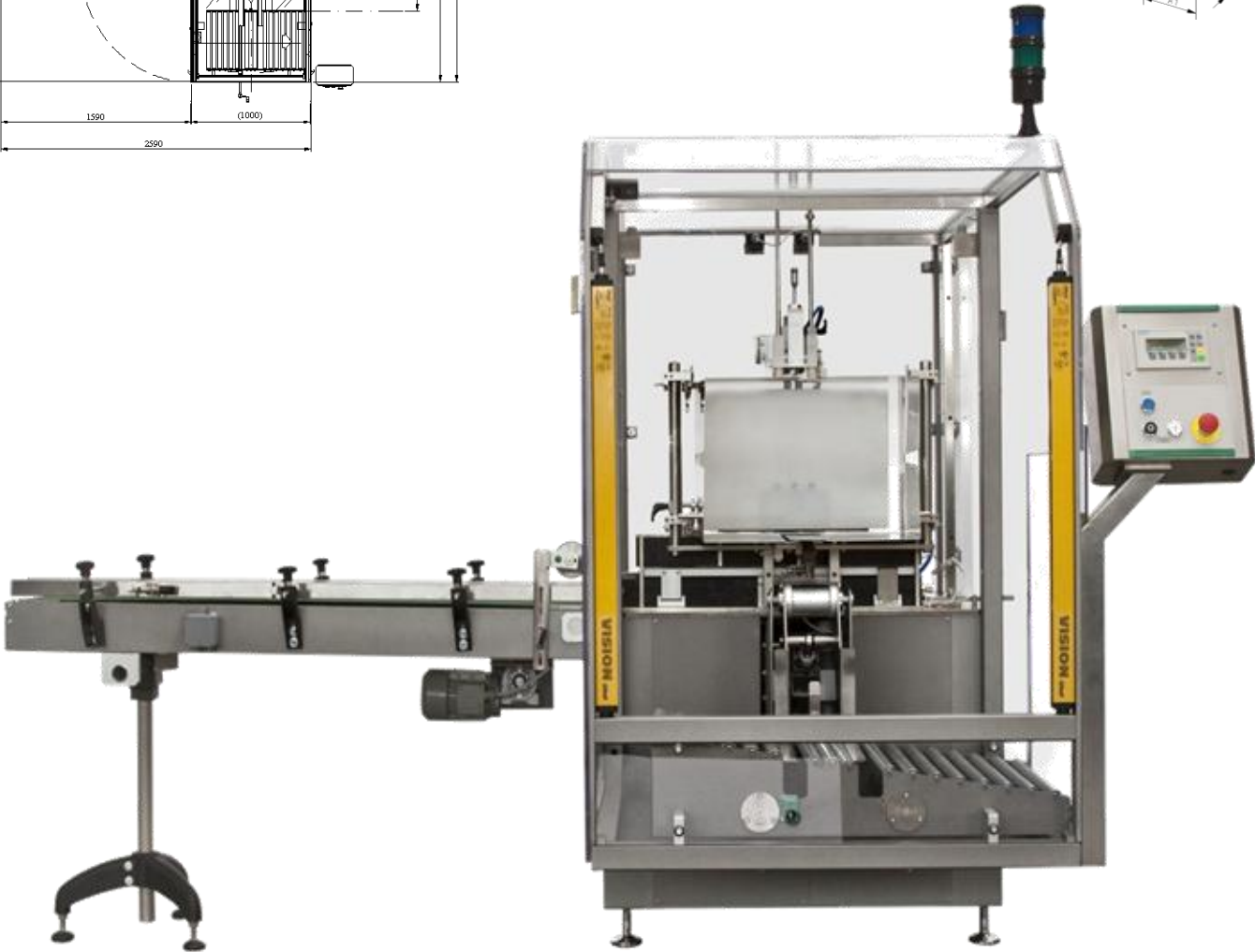
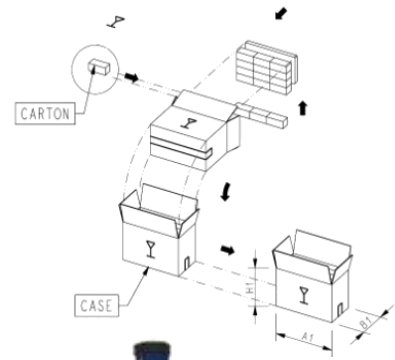
English

Machine layout



Size range

A1	200-600 mm
B1	125-400 mm
H1	65-400 mm
A	25-580 mm
B	10-120 mm
H	65-300 mm



PS300 | Semi-automatic CasePacker

Semi-automatic Case Packer, designed and built to satisfy small to medium output production requirements: suitable to the customer in need of simplicity and minimal dimensions, but does not want to give up speed and reliability. The pre-formed cases must be placed directly on the loading area. Cartons are fed by conveyor into the stacking unit, where they are collated upwards, as it is programmed through the Operator Interface Panel. The case is then automatically fed and discharged on a free running conveyor.

- Wide range of cases and products working sizes.
- Fully enclosed structure with Safety guards and security Micro to suit CE rules.
- Cases feeding area totally safe, free from any mechanical movement.
- Torque overloading control on every motor.
- PLC controlled functioning.

- Fast and easy change over, with digital indicators and quick fixing of mobile change parts.
- Already set for downstream machine coupling.
- Machine stop for minimum load at infeed with automatic re-start.
- Zone for carton transit, stacking and transfer into case, completely isolated to prevent products from falling into the machine
- Output: > up to 6 cases/minute